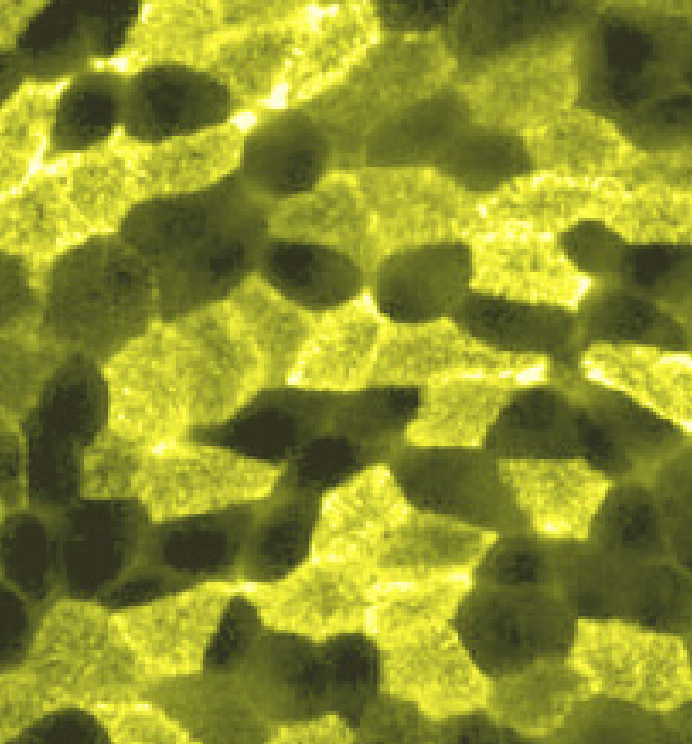




American Thoracic Society

25 Broadway, 18<sup>th</sup> Floor • New York, NY 10004

The Assembly on  
*Respiratory Cell &  
Molecular Biology*



Please direct all inquiries to  
[rcmb@thoracic.org](mailto:rcmb@thoracic.org)

Facebook: <https://www.facebook.com/RCMBatATS>

Twitter: [https://twitter.com/ats\\_rcmb](https://twitter.com/ats_rcmb)

Journal Club Twitter: <https://twitter.com/rcmbjclub>

The Assembly on  
*Respiratory Cell &  
Molecular Biology*



You can use this QR  
code on your phone to  
sign up now!

## Get Involved!

You can now register to become more involved in the ATS Assemblies, ATS Committees or both.

There are many ways to grow within ATS and the Assemblies and Committees are a great starting point.

The Assembly on  
*Respiratory Cell &  
Molecular Biology*



## Welcome

We would like to personally introduce you to the ATS Assembly on Respiratory Cell & Molecular Biology (RCMB).

The RCMB Assembly seeks to advance our understanding of the biological basis of lung disease through the promotion of research and research funding, education, and by facilitating interactions with other Assemblies. We openly welcome new members, particularly fellows, post-doctoral trainees, and junior faculty.

### Who are we and what are our research interests?

Members of the RCMB Assembly are MD or PhD investigators linked by a dedication to studying cellular and molecular functions in the normal and abnormal lung. We aim to understand the biological basis of

lung health and disease. RCMB members are recognized leaders across a broad spectrum of research arenas related to lung development, injury and repair, including but not limited to:

- Fibroblast and epithelial cell biology
- Extracellular matrix biology
- Cell signaling and cell fate (apoptosis, autophagy, proliferation)
- Stem cell biology and cell-based therapies
- Regenerative medicine
- Lung development and aging
- Functional genomics/proteomics/metabolomics
- Epigenetics, microRNA, and gene regulation
- Gene therapy
- Pulmonary fibrosis
- Lung cancer
- Chronic obstructive pulmonary disease
- Mucins
- Ions and channels
- Surfactant biology

### Why participate in the RCMB?

Assembly participation is the primary mechanism by which ATS members can become involved in the Society as a whole, and due to their size, Assemblies allow members to experience the ATS on a smaller and more manageable scale. In addition to facilitating interactions between ATS members with similar interests, the Assemblies are also responsible for the annual International Conference content and creating and updating ATS Official Documents. The following are some specific advantages for fellows, post-doctoral trainees, and junior faculty to actively participate in the RCMB:

- Discuss research ideas and collaborate with ATS members who share similar scientific interests, with opportunities to engage in projects which span across research disciplines, diseases, and training backgrounds.

- Become acquainted with others in your field of research. Getting to know your peers (and getting them to know you!) is an important part of establishing a successful academic career, and it provides opportunities for additional mentorship. It also adds to the enjoyment of attending the ATS International Conference.
- Opportunities to become more involved in the International Conference, such as chairing symposia or mini-symposia and facilitating thematic poster sessions or poster discussion sessions.
- Provides a platform to impact the direction of ATS activities, projects and policies.
- Become eligible for RCMB Abstract Scholarship Awards.

### How to become involved in RCMB activities

- Update your ATS profile: Go to the ATS website and click on the members tab and select "Update Your Profile". Follow the instructions on how to designate RCMB as either your primary or secondary assembly. Your changes will update in the ATS database one hour from the time you submit.
- Attend the annual RCMB Membership Meeting, as well as the pre-meeting reception, held on Monday at the ATS International Conference each year.
- Serve on one of the RCMB assembly standing committees: the Planning Committee, Program Committee, and Nominating Committee. Interested members should contact the respective Committee Chairs, which can be found on the RCMB web page under "Officers and Committees" on the ATS website. Please note that committee memberships are determined in the spring prior to the International Conference.
- Participate in one of the RCMB Working Groups.
- Submit proposals for Assembly Projects and Symposia for the International Conference.